



**Innovative Photoluminescent  
Emergency Egress Solutions**

# The Highest Performing, Energy Efficient Life Safety System in the Nation

The Safe Glow® emergency egress system is comprised of photoluminescent signs, lighting and markers that work together to direct evacuees along the path of egress when power failures or emergencies happen. Powered by ambient light, these products begin storing energy the moment someone turns on the lights when they enter your facility. When the lights go out, Safe Glow® products will glow for more than twelve hours, far exceeding electrical alternatives and code requirements. Handsome in any interior decor, they operate with fail-safe reliability, save time, energy, money and most important, will save lives.

The Safe Glow team takes our commitment to life safety seriously. We manufacture all of our products with a high level of quality, performance, ingenuity and American craftsmanship. Safe Glow® Professional Interior products are:

- Unsurpassed in photoluminescent performance
- Environmentally friendly – consume no electricity, non-radioactive, non-toxic, eliminate batteries
- Warranted 5/3 years on all interior/exterior products
- Projected to have a 25 year life
- Easily Installed
- Simple to maintain (cleaning and minimal annual testing)

## Photoluminescent Exit Signs

Safe Glow UL listed exit signs are code compliant, use no electricity or batteries, and require no replacement parts or maintenance. Replacing an LED exit sign with a Safe Glow® exit sign will save you at least \$50 per year, per exit sign, over the 25 year life of the sign (that's 25 x \$50 = \$1,250 per sign). Use it in new construction, and you'll save even more by eliminating the need for dedicated conduit, wire, junction boxes and labor! Energy efficient rebates and LEED points are also available.



## Photoluminescent Emergency Lighting

Non-electrical emergency lighting is one of our most innovative products. Simply place 2 - 4 photoluminescent bars inside of a fluorescent fixture and you'll get 30 minutes of emergency lighting – without lag time – every time power is lost. They have been dubbed “Place and forget” emergency lighting by Lawrence Livermore National Laboratory for their “no maintenance required” fail-safe performance.

# Innovative Photoluminescent Life Safety

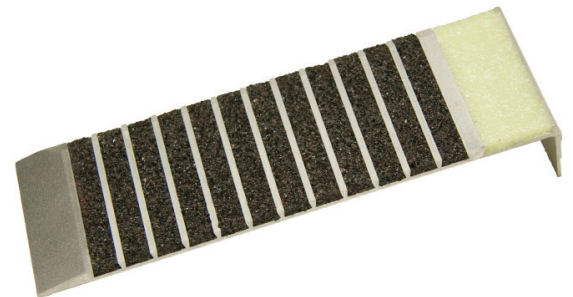
## Low Level Egress Products



When smoke fills hallways and drives evacuees to their knees for breathable air, these products combine to provide direction and reinforce that they are going the right way to get out alive. Low-level Path Markers meet the 2009 NFPA and ICC building codes, and the 2007 and 2010 California building codes.

## Stair tread Covers and Inserts

Now required by the NFPA and ICC building codes for some buildings, these stair tread covers illuminate the leading edge of every step in your emergency stairwell. Cement composite non-slip surface facilitates a sure footed descent of your stairs in darkness. All Safe Glow® Stair tread Covers and Inserts meet UL 1994 performance requirements for being able to be effectively charged in as little as 1 foot candle of light.



## Walkway Markers

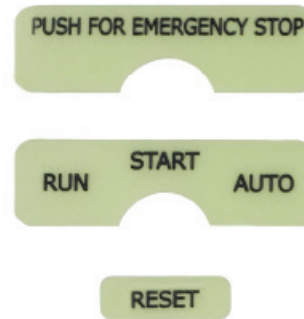
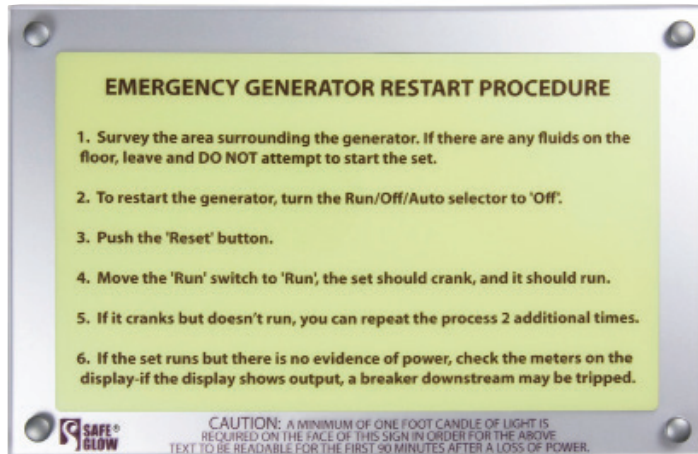


Developed specifically for outdoor applications, these markers can be adhered horizontally or vertically to mark pathways, handicapped ramps, crosswalks or k rails. They glow all night, then recharge in daylight. Blue markers are available for marking fire hydrants to allow fire fighters to locate hydrants more quickly when time is of the essence. Walkway markers can be used indoors or out.

# Innovative Photoluminescent Life Safety

## Emergency Generator Backup System

This system facilitates restarting of emergency generators when they fail to start in an emergency. Customized photoluminescent back-lit directions and critical control markers allow engineers to restart your emergency generator in total darkness.



## Door Knob Rings



The first step in evacuating any room, especially those without windows, is finding the door. These rings make locating the door and actuating the door knob an easy task.

For more information, call:



304A South Van Dien Ave.  
Ridgewood, NJ 07450

**(201) 493-1600** or visit [www.imagingonellc.com](http://www.imagingonellc.com)

